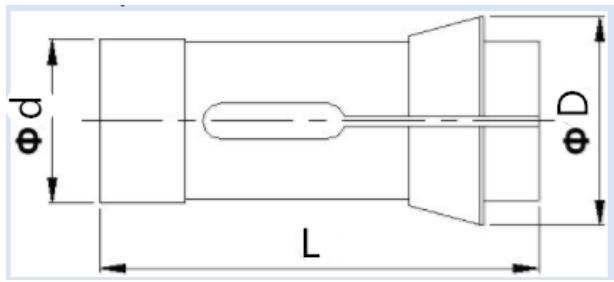


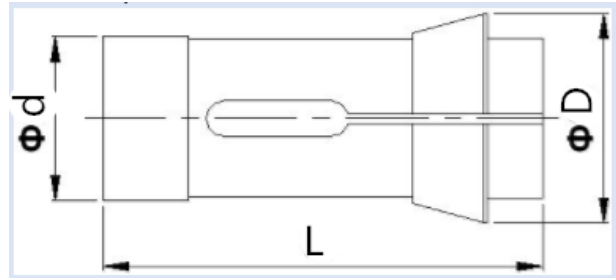
Headstock Collets



※ Carbide and HSS are available

NO.	ΦD	Φd	L	Bore (ΦX-max)			Code				Machine type	
#1	12	8	42	4	3	3	F8/577	101E	TF8	40.001	CITIZEN	R-04
											METAFIL	D3
											PETERMANN	P4,P7
											TORNOS	M4,T4,TV
											TRAUB	M45
#2	15.5	10	47.5	7	6	5	F10/86	109E	TF10	40.002	MAIER	ML7
											PETERMANN	P7
											STROHM	M75-M105
											TORNOS	M7,MICRO-7
											TORNOS (DECO)	DECO 7,DELTA12
											TRAUB	TNL7, M75,M105
#3	16	10	46	7	6	5	F10/1178	111E		140.001	BECHLER	A4,A7
											TSUGAMI	T7,B007,BM07,NP-4W
#4	18	12	58	8	7	5					NOMURA	NSP8410,NSP8420
#5	18	14	46	10	8	7	F14/98	117E		140.002	BECHLER	A7,A10,AR10
#6	19	13	64	8	7	5	F13/357	116E	TF13	40.016	BECHLER-ENC	ENC74/75
											TORNOS	MS7,ENC74/75,EVOD-10,MICRO-7
#7	20	14	47	10	8	7					TSUGAMI	L10
#8	20	12	51	8	7	5					STAR	JNC8
#9	21	15	64	10	8	7	F15/580	120E	TF15	40.003	CITIZEN	R-07,D/F/G/L-10
											HANWHA	SL12,XD12H,XP12S
											MAIER	ML12A/B/C/D,ML125K II
											STAR	SW/SH-7,SW/SR/JNC/RNC/SNC-10
											STROHM	M105/125
											TORNOS	R10,M10,TOP100
											TORNOS (DECO)	DECO 10
											TRAUB	TNL12/7, M105,M125
											TSUGAMI	NT/NP11
#A	21	16	64	12	10	8	F16/1076	1212E	TF16	40.012	CITIZEN	B/F/K/L/M-12,MSL-12
											HANWHA	SL12,HANEX11,XD12J
											NEXTURN	SA12
											POLYGYM	DIAMOND12,12CS
											TORNOS	R125,NAT125,GT13
											TORNOS (DECO)	DECO 13
TRAUB	TNL12/7/16											

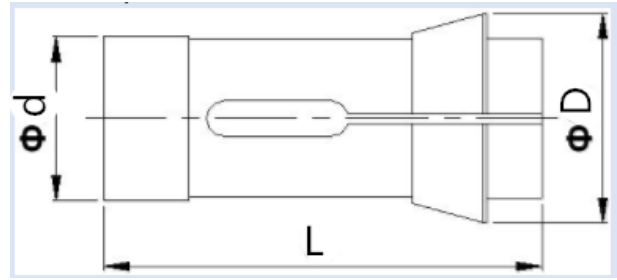
Headstock Collets



※ Carbide and HSS are available

NO.	ΦD	Φd	L	Bore (ΦX-max)			Code			Machine type		
				○	□	□						
#B	22	16	50.5	12	10	8				90.015	NOMURA	NSP1053,NN10K
#C	22	15	47	10	8	7	F15/358	121E		90.004	PETERMANN	P7R
#D	22	16	55	12	10	8	F16/104	123E		90.005	PETERMANN	P7R,P10,10HS
#E	25	18	64	14	12	9					STAR	SE12,S13,VNC12,SJ15
#F	25	18	67	14	12	9	F18/85	127E		140.003	BECHLER	B12
											MANURHIN	Swing13,Traminer13
#10	26	20	54	16	13	11	F20/201	136E		225.003	BECHLER-ENC	ENC162/164
											GAUTHIER	GM12
											MANURHIN	Twin13/20,Compact,First 226/326C
											TORNOS	MultiSWISS,EVODECO-16,DELTA12
											TORNOS (DECO)	DECO 13/16,ENC163/164/167
TRAUB	TNL16											
#11	26	20	67	16	13	11					STAR	SB16
											TSUGAMI	BO12,NT/NP-12
#12	26	20	68	16	13	11					NOMURA	NSP1653,NSP1253
											POLYGYM	DIAMOND16,16CS
											WANG TZYY	SL1693
#13	26	7	10.5	3			F7/206	1020E	TF7		PETERMANN	P3
#14	28	20	67	16	13	11	F20/87	138E	TF20	40.004	CITIZEN	C/K/M-16
											GILDEMEISTER	GLD12
											MAIER	ML16A/B/C/D
											MANURHIN	Twin13,Decotum16
											STAR	JNC/RNC/KJR/SA/SB/SE/SR/SH-16
											TORNOS	R16,M15
TRAUB	TNL16											
#15	28	23.8	62	18	15	12	TF24	S16-HMS		40.024	HARDINGE	S16-HMS
											TSUGAMI	NP17,NP16,NT17
#16	28	22	67	18	15	12	F22/88	139E		140.004	BECHLER	B16
#17	30	22	55	18	15	12	F22/71	140E		231.002	HANWHA	SL16,HANEX17,XD/XP-16H,ML18G
											MIYANO	Sliding Spindle
											TRAUB	A15
											TSUGAMI	BO/BS/BN/BW12,BO/BS18,NT-NP16
#18	32	24	65.5	20	17	14					STAR	JNC16,VNC20
#19	32	26	67	22	19	15	F26/90	146E		140.005	BECHLER	B20,BR20
#1A	32	22	66	18	15	12	F22/727			90.007	PETERMANN	P16

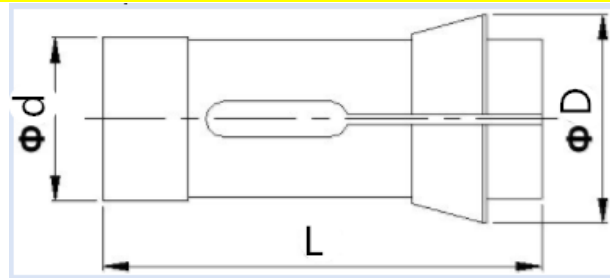
Headstock Collets



※ Carbide and HSS are available

NO.	ΦD	Φd	L	Bore (ΦX -max)			Code				Machine type		
#1B	35	25	77	20	17	14	F25/64	145E	TF25	40.005	BECHLER-ENC	ENC163/167	
											CITIZEN	D/E/F/L/M-16,A/B/E/F/G/L/M-20	
											DMG	GMC 20	
											GAUTHIER	GM20	
											GILDEMEISTER	GLD16/20,GS20-L	
											HANWHA	SL20,HANEX20,XD20,XDI-20,XP20	
											HARDINGE	S20,ST220	
											MAIER	ML18S,ML18H,ML20A/B/C/D/E	
											MANURHIN	KMX20/26,Mirabel,Swing,Traminer20	
											NEXTURN	SA18,SA20,SA20E	
											STAR	B/F/SR/SW/SB/VNC/SV20,KNC16/20	
											STROHM	M205/255	
											TORNOS	RR20,R20,M20,CT20,GAMMA-20/6	
											TORNOS (DECO)	DECO 20,DELTA 12/20,SIGMA 20	
TRAUB	TNL18/20, A-205/255/15/25/30/42												
TSUGAMI	BO18B,NT-NP20,BO/BS/BU/BW-20												
#1C	35	28	77	24	20	17					S20-HM	HARDINGE	S20-HM
											JINN FA	JSL-20	
											TSUGAMI	BO18A,S20,BS18	
#1D	36	26	67	20	17	14				511.001	CITIZEN	L16/20,F16/20,M16,G20,E20	
#1E	36	26	67	22	19	15				511.001	NOMURA	NN20KF	
											POLYGYM	DIAMOND20,20B,20CS,20CSB	
											STAR	JNC16,ZNC16,VNC20,SR20	
#1F	38	30	65	25	21	17	F30/101	1446E	O161	90.009	TORNOS	ENC262/264,GT26,SIGMA20,ST26	
											TORNOS (DECO)	DECO 26,TOP200	
#20	38	28	70	24	20	17	F28/93	148E		231.004	MIYANO	BNF16S,BJ20,18mm Swiss Slant	
											TRAUB	A20	
#21	38	27	73	23	20	16					MIYANO	BNC20	
#22	39	29	72	25	21	17					NOMURA	P-23	
#23	40	33	80	28	24	20					HARDINGE	S25-HM	
											JINN FA	JSL-26	
#24	40	33	80	28	24	19					S25-HM	TSUGAMI	BS26A,BS25

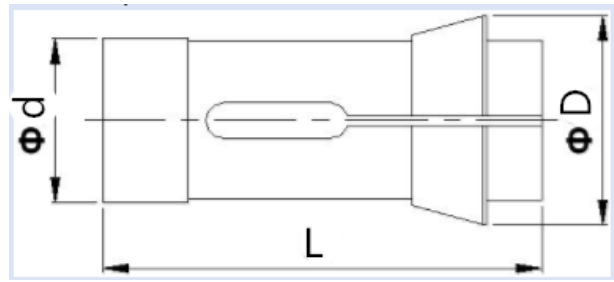
Headstock Collets



※ Carbide and HSS are available

NO.	ΦD	Φd	L	Bore (ΦX-max)			Code				Machine type	
				○	⬡	□						
#25	42	30	80	25	21	17	F30/63	157E	TF30	40.006	CITIZEN	E/F/L-25
											GAUTHIER	GM25
											HARDINGE	S25-HS
											MAIER	ML26S,ML26H
											STAR	F/KJR/SCN-25
											STROHM	M205/255
											TORNOS	M25
											TRAUB	TNL26
											TSUGAMI	BS26B,BS25
#26	42	32	84.5	28	24	19					NOMURA	NNCP2553,NN25K
#27	42	30	78	26	22	18					POLYGYM	DIAMOND25,25B,25CS,25CSB
											WANG TZYY	SL2596
#28	43	35	70	30	26	21	F35/67	162E			INDEX	25#
#29	43	30	66	26	22	18					RIKEN	SAD-25
#2A	45	32	75	27	23	19	F32/221	161E		231.005	GILDEMEISTER	GLD25L,GS25-L
											HANWHA	SL26,XD26,XP26,HANEX25
											MAIER	ML26A/B/C/D/E
											MANURHIN	KMX20/26,Twin20,Swing20
											MIYANO	BJ26,BJ26R
											NEXTURN	SA26,SA26E
											TRAUB	A25
#2B	45	40	95	35	30	24					MIYANO	BNC25
#2C	47	37	92	32	27	22	F37/740	1536E	TF37	40.008	CITIZEN	C/E//F/G/L/M-32,E32J
											HANWHA	SL32,STL32,XD32
											JINN FA	JSL-32
											MAIER	ML32A/B/C/D/E,MLK32
											NEXTURN	SA32
											POLYGYM	DIAMOND32,32B,32CS,32CSB
											STAR	VNC/MR/SR/SV-32,JNC/KNC-25/32
											TORNOS	MR28/32,TBM32,SIGMA32
											TORNOS (DECO)	DECO 32
											TRAUB	TNL32
											TSUGAMI	B/BS/HS//NT/NP-32,B0385E,BH38E
											WANG TZYY	SL3295
#2D	48	35	80	30	26	21	F35/94	163E			INDEX	30#
#2E	49	40	92	35	30	24					HANWHA	SL35

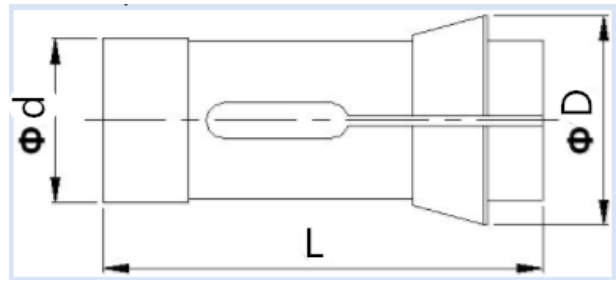
Headstock Collets



※ Carbide and HSS are available

NO.	ΦD	Φd	L	Bore (ΦX-max)			Code				Machine type	
#2F	49	38.1	108	32	27	22	F38/72	164E		285.002	INDEX	22# B&S,32#
											LI CO	32#
											MANURHIN	Mrabel PM32
#30	50	40	92	35	30	24					HANWHA	SL-35HP-II (SUB)
#31	51	42	92	38	33	27					POLYGYM	38#
#32	52	44	94	39	33	27	F44			511.026	HANWHA	SL-38HP-II
											NEXTURN	SA32,SA38
#33	52	42	86	37	32	26					NOMURA	P-32
#34	53	43	92	38	33	27	F43		TF43	511.024	TORNOS (DECO)	DELTA 38/5
#35	53	43	92	38	32	26	F43		TF43	511.024	TSUGAMI	BH38
#36	54	48	100	43	37	30	F48		BS38	511.028	TORNOS (DECO)	DELTA 38/5 (SUB)
#37	54	48	100	42	36	29	F48/81		BS38	511.028	TSUGAMI	BH38(SUB)
#38	54.2	44.4	108	39	33	27					MIYANO	BNC34
#39	54.5	40	104	35	30	24					JINN FA	C32
#3A	55	42	94	38	33	27	F42/99	171E		231.007	HANWHA	XD35
											INDEX	36#
											MAIER	ML36
											MANURHIN	Mrabel PM32, Swing32, XL32, XL36
											MIYANO	LX06, BNC20, BNC/BND/BNE/BNJ-34
#3B	55	46	65	41	35	29					LI CO	TNS-30/42
#3C	60	48	94	42	36	29	F48/81	173E	TF48	231.009	HANWHA	STL38
											INDEX	42#
											JINN FA	JSL-42AB
											MANURHIN	XL36
											MIYANO	BNA/BNC/BND/BNJ-42
											POLYGYM	DIAMOND SY42
STAR	STM/ST-38, SV38R											
#3D	66	48	84	42	36	29					RIKEN	SAD-40
#3E	68	54	87	48	41	34					JINN FA	JSL-42AB, C44
#3F	68	56	94	50	43	35					RIKEN	SAD-50
#40	70	58	94	52	45	36	F58/355	177E			INDEX	52#
											MIYANO	LX08, ABX/BND/BNE-51
#41	72	60	89	54	46	38					JINN FA	JCL-50
#42	84	66	110	60	52	42	F66/359	185E		231.001	INDEX	60#
											MIYANO	BNE64
#43	90.25	72	142	65	56	46					LI CO	65#
#44	93	75	100	67	58	47					JINN FA	JCL-60
											RIKEN	SAD-65

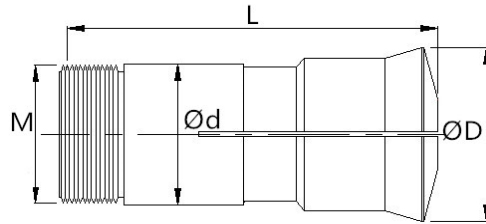
Headstock Collets



※ Carbide and HSS are available

NO.	ΦD	Φd	L	<input type="checkbox"/> <input type="checkbox"/> <input type="checkbox"/>			Code				Machine type	
				Bore (ΦX-max)								
#45	98	85	110	77	66	54					JINN FA	JCL-75
#46	107	90	130	82	70	58		193E			INDEX	80#

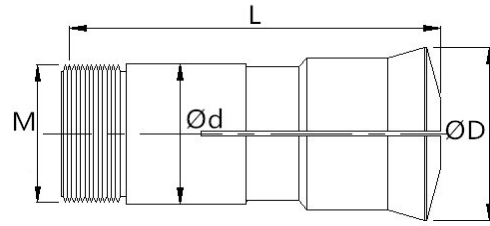
Pull-Type Collets



※ Carbide and HSS are available

NO.	ΦD	Φd	L	Thread M	Bore (X-max)			Machine type	
#50	10.5	6	31.3	5x36F"	2			SCHAUBLIN	B6 72/00128
#51	13	8	35.5	6.82x0.625	2			SCHAUBLIN	B8 72/00137
#52	21	15	60	15x1.0	9	7	6	DAIWA	10#
#53	24	16	72	15x0.85	10	8	7	FUJI	0825#
#54	24	17	67	17x1.0	11	9	7	DAIWA	102#
#55	26	19	76	18.5x1.2	13	11	9	EGURO	6#
								YUNGHO	YB-15
#56	26	19.05	76	18.5x1.25	13	11	9	KITAMURA	XKNC-15FA
#57	26.3	20	73	S 19.7x1.666	14	12	10	SCHAUBLIN	W-20 80/00004
#58	28	20	122	S 19.7x2.0	14	12	10	SCHAUBLIN	L-20 77/00122
#59	28	22	85	21x1.0	15	13	10	DAIWA	15#
#5A	32	23	94	Tr 23x1.5	16	14	11	NANN	359E (K23)
#5B	32	23	97	22x1.5	16	14	11	WACHIGAL	WPL-17
#5C	33.7	25	97.6	S 24.7x15F"	17	14	12	NANN	3640E(2)
#5D	33.7	25	97.6	S 24.7x15F"	18	15	12	SCHAUBLIN	W-25 80/00005、HW-25 80/02010
#5E	34	25	102	24x1.5	17	14	11	EGURO	8#
								YUNGHO	YB-20
#5F	34	26	92	25x1.25	18	15	12	KITAMURA	XKNC-20FA
#60	36	28	100	25x1.5	18	15	12	FUJI	1820#
#61	37.3	31.75	88	31.3x20F"	24	20	16	HARDINGE	5C
#62	38	28	82	24x20F"	17	14	12	WANG TZYU	20#
#63	38	30	75	25x1.5	18	15	12	TSUGAMI	BM-16
#64	38	30	79	26x1.5	19	16	13	STAR	SC-20
#65	39.5	32	102	31.5x20F"	25	21	17	YUNGHO	YB-25
#66	40	32	106	S 29.7x15F"	22	19	15	NANN	3714E
#67	40	32	106	S 29.7x15F"	23	19	16	SCHAUBLIN	HB-32 72/02010
#68	41	33	100	32x1.5	25	21	17	CITIZEN	BL20/25
#69	41.5	34	84	29x20F"	22	19	15	SENDAY	SD-25

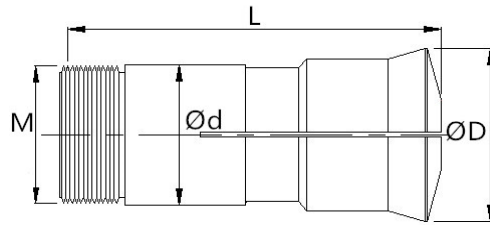
Pull-Type Collets



※ Carbide and HSS are available

NO.	ΦD	Φd	L	Thread M	Bore (X-max)			Machine type	
#6A	42	32	118	32x1.5	25	21	17	EGURO	10#
#6B	44	36	88	32x1.5	25	21	17	RIKEN	PULL-25
#6C	45	32	114	Tr 32x1.5	25	21	17	NANN	386E (K32)
#6D	45	32	124	Tr 32x1.5	25	21	17	NANN	3718E
#6E	46.5	37	101	32x1.5	25	21	17	TAKAMAZ	850
#6F	49	35	124	33x1.5	26	22	18	FUJI	1825#
#70	49	39	118	38x18F"	32	27	22	YUNGHO	YB-32
#71	49	42	95	38x20F"	31	26	22	SENDAY	SD-32
#72	51	42	95.5	36x1.5	28	24	19	SENDAY	SD-34
#73	57.4	48	114.5	47.5x1.75	40	34	28	HARDINGE	16C
#74	57.5	43	137	40x1.75	33	28	23	FUJI	1832#
#75	60	45	145	Tr 45x2.0	37	32	26	NANN	389E (K45)
#76	60.3	46	120	40x1.5L	32	27	22	SCHAUBLIN	B46 72/02007
#77	60.3	46	120	40x1.5L	33	28	23	NANN	9049E
#78	64	52	137	50x16F"	42	36	29	YUNGHO	YB-42
#79	66	55	110	50x1.5	42	36	29	RIKEN	PULL-40
#80	68	56	120	51x20F"	42	36	29	SENDAY	SD-45
#81	68	61	120	56x20F"	46	40	32	SENDAY	SD-52
#82	69.3	53	136	47x1.5L	39	33	27	NANN	9070E
#83	73.2	60.4	163	60x1.5	52	45	36	HARDINGE	20C
#84	97	83	132	78x2.0	65	56	45	RIKEN	PULL-60
#85	1.19"	1.06"	4.375"	1.048"x16LH	18	15	12	DAVENPORT	Burring
#86	1.5"	1.218"	4.38"	1.143"x16RH	21	18	14	DAVENPORT	Serro B
#87	2.05"	1.625"	3.25"	1.611"x18F"	34	29	24	HARDINGE	2J
#88	2.41"	2"	3.75"	1.988"x20F"	40	34	28	HARDINGE	3J
#89	2.97"	2.562"	4"	2.55"x18F"	54	46	38	HARDINGE	22J

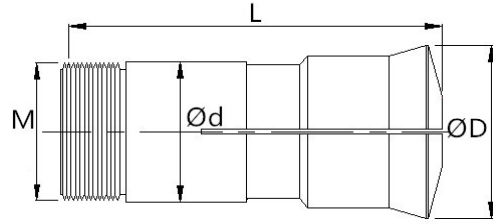
Guide Bushes



※ Carbide and HSS are available

NO.	ΦD	Φd	L	Thread M	Bore (ΦX-max)			Code			Machine type	
#100	12	9	44	M8x0.75	4	3	3	3077E	1.001	PD-4	BECHLER	A4,A7
											GAUTHIER	1h
											PETERMANN	P4,P7
											TORNOS	M4,T4,TV
#101	12.5	9	44	M8x0.75	4	3	3		51.001	J3	CITIZEN	R04
#102	14.5	11	52	M10x0.75	5	4	3	3134E	3.001	TD-7	CITIZEN	R07
											GAUTHIER	1HR
											HANWHA	XD07
											MAIER	ML7
											METAFIL	D3
											NOMURA	P6
											STAR	TD-7,SW7
											STROHM	M75/105
											TORNOS	M7
											TORNOS-DECO	DECO-7,MICRO-7
TSUGAMI	NP-4W,BO07											
#103	15.8	12	52	M12x1.0	7	6	5	3149E	261.001		BECHLER	A7,A10
											TSUGAMI	T7,BO07,BM07
#104	17	13	68	M13x1.0	7	6	5		45.001		TORNOS	M7,MS7
#105	19	15	54	M14x1.0	10	8	7				TSUGAMI	L10
#106	20	14	61	M14x1.0	10	8	7		480.001	P853D	NOMURA	NS-P8410,NS-P8420,NN12K
#107	20	16	63	M14x1.0	10	8	7		481.001	P1053D	NOMURA	NS-P1053,NN-10K
#108	20.5	16	59	M14x1.0	10	8	7	3260E	8.001	TD10	BECHLER-ENC	74/75
											CITIZEN	D10,E10,F10,L10
											GAUTHIER	GM 12
											PETERMANN	P7R,10,10HS
											STAR	JNC-10,RNC-10,SNC-10
											TORNOS	M10,R10,MS7,R125
TORNOS-DECO	DECO-10, TOP-100											
#109	21.9	18	60	M18x1.0	12	10	8	3319E	174.001	SD125R	CITIZEN	A12,B12,C12,F12
											HANWHA	HANEX11,SL12
											NEXTURN	SA-12
											POLYGYM	DIAMOND 12,12CS
											TORNOS	M10,R10,R125
TSUGAMI	NT-11,NP-11											

Guide Bushes

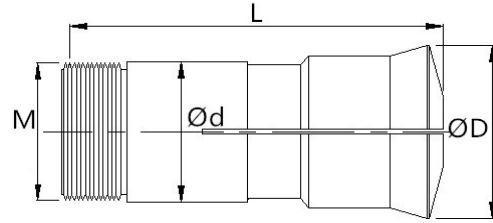


※ Carbide and HSS are available



NO.	ΦD	Φd	L	Thread M	Bore (ΦX-max)			Code			Machine type	
#10A	21.9	18	60	M16x1.0	12	10	8	3320E	166.001	SD125R16	CITIZEN	B12,C12,F12,K12,M12
											GILDEMEISTER	GLD 12,SPRINT 12 5/7,Linear
											HANWHA	SL12,XD12H,XP12
											MAIER	ML12G,ML12S,ML125KII
											MANURHIN	Swing 13,Traminer 13
											NEXTURN	SA-12
											STROHM	M105/125
											TORNOS	M10,R10,MS7,R125
											TRAUB	TNL-12/7
											TSUGAMI	NT-11,NP-11
#10B	24	21	58	M18x1.0	12	10	8	3438E	450.001	SNC15	STAR	SH/VNC12,SJ/SNC15,JNC/RNC16
#10C	26	22	70	M20x1.0	16	13	11	487.001	P1653D		NOMURA	NS-P1653,NS-P1253,HH/NN-P16
											POLYGYM	DIAMOND 16,16CS
#10D	26	22	70.5	M20x1.0	16	13	11	487.001	P1653D		STAR	SB16,SR16
											TSUGAMI	BO12
											WANG TZYU	SL-1693
#10E	28	23	72	M22x1.0	16	13	11	483.001	TSG20R		TSUGAMI	NP-17,NP-16,NT-17,S16
#10F	29	22	68	M19x1.0	15	13	10	3454E	13.001	TD20	BECHLER	A7,A10,AR10
											GAUTHIER	GM 20
											MANURHIN	Traminer 16
											STROHM	M205/255
											TORNOS	M15,R16,RR20
											TSUGAMI	NT12
#110	29	22	68	M22x1.0	16	13	11	3455E	39.001	TD20R	HANWHA	HANEX17,ML18-G,SL/XD/XP-16
											MAIER	ML18S,ML18H,ML20D
											MANURHIN	Twin 13,Decotum 16
											STAR	RNC/SE/SA/SR/VNC/KNC/KJR-16
											TORNOS	M15,R16,RR20
											TRAUB	TNL-16
											TSUGAMI	NT12
#111	29	26	77	M25x1.0	20	17	14	99.001	TD26	TORNOS-DECO	DELTA-12/20,GAMMA-20/26	
										TSUGAMI	BO20-CV,HS207	

Guide Bushes

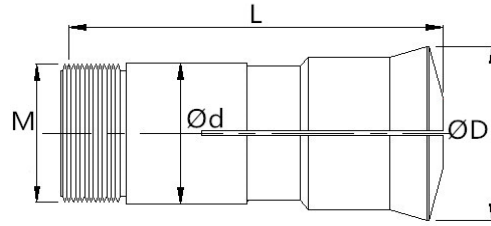


※ Carbide and HSS are available



NO.	ΦD	Φd	L	Thread M	Bore (ΦX-max)			Code			Machine type	
#112	30	24	61	M24x1.0	16	13	11	3507E	61.002	O201	BECHLER-ENC	162/164
											CITIZEN	C/D/F/G/K/L/M-16
											MANURHIN	Compact
											PETERMANN	P16
											TORNOS-DECO	DECO-13/16
											TSUGAMI	BS12,NT/NP/S-16/17,BO18,BS18
#113	34	28	82	M25x1.0	20	17	14	3602E	22.001	TD25S	CITIZEN	A20,B20,F20,M20,L20
											HANWHA	HANEX20,SL20S,XD20H-M,XDI20
											HARDINGE	ST220
											MAIER	ML20
											NEXTURN	SA-18,SA-20,SA-20E
											STAR	SR20,KNC16/20,VNC20
											TORNOS	R20,RR20
											TRAUB	TNL-17,TNL-18,TNL-20
#114	35	30	59	M30x1.0	21	18	15		510.001		CITIZEN	L16/20,F16/20,E20,WF6,206M
											STAR	JNC16,L16/20,ZNC16,VNC20,SR20
#115	35	30	59	M30x1.0	21	18	15		510.001		POLYGYM	DIAMOND 20,20B,20CS,20CSB
#116	35	30	67.5	M30x1.0	21	18	15				NOMURA	NN-P20,NN-20KF
#117	36	30	70	M28x1.0	20	17	14		486.001	NN20KD	HARDINGE	S20,ST220
											JINN FA	JSL-20
											NOMURA	NN-P
											TSUGAMI	NP-20,BS20,BO18,BS18
#118	38	28	81	M25x1.0	20	17	14	3610E	18.001	TD25/167	TORNOS	M20,M25/28
											TORNOS-DECO	DECO-20
											TSUGAMI	BS20,NP20,S20
#119	38	32	70	M30x1.0	21	18	15				TSUGAMI	BA-26L
#11A	38	33	70	M30x1.0	21	18	15				TSUGAMI	BA-26
#11B	38	28	81	M25x1.0	20	17	14	3610E	18.001	TD25/167	BECHLER	B12,B16,B20
											BECHLER-ENC	163/167
											DMG	GMC 20
											GILDEMEISTER	GLD 16/20,GS20-L
											MANURHIN	KMX,Swing,Traminer,Twin 20
											TRAUB	TNL-20

Guide Bushes

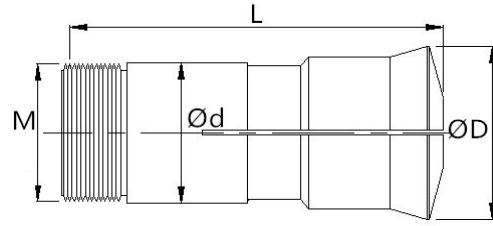


※ Carbide and HSS are available



NO.	ΦD	Φd	L	Thread M	Bore (ΦX-max)			Code			Machine type	
#11C	39	32	71	M32x1.0	25	21	17	3708E	282.001	TSD20	CITIZEN	E20,F20
											POLYGYM	Serie 20mm
											TORNOS	M20,M25
											TSUGAMI	S25
#11D	41	34	87.5	M34x1.0	26	22	18	3733E	451.001	CD25	CITIZEN	E25,E25J,F25,L25
											GILDEMEISTER	GLD 25L,GS25-L,SPRINT 20,Linear
											HANWHA	HANEX25,SL26HP1I-S/H,XD26H
											HARDINGE	ST25,ST225
											JINN FA	JSL-26
											MAIER	ML26S,ML26H,ML26D
											MANURHIN	KMX 26
											NEXTURN	SA-26,SA-26E
											POLYGYM	DIAMOND25,25B,25CS,Serie 20mm
											STAR	SCN25,KJR25
											TORNOS-DECO	DECO-26,SIGMA-20
											TRAUB	TNL-26
											TSUGAMI	S-25,BS-26
WANG TZY	SL-2596											
#11E	44	36	89	M36x1.0	26	22	18				NOMURA	NNC-P2553,NN-25K
#11F	46	41	54	M38x1.0	30	26	21		488.001		TSUGAMI	BS32
#120	47.8	40	72	M36x1.0	26	22	18		172.001		GILDEMEISTER	SPEED 32
											STROHM	M205/255
#121	48	42	82	M40x1.0	32	27	22		28.010	TD32	CITIZEN	C/E/G/L/M-32,E32J
											JINN FA	JSL-32
											POLYGYM	DIAMOND 32,32B,32CS,32CSB
											WANG TZY	SL-3295
#122	49	42	82	M40x1.0	32	27	22	3827E	28.001	TD32S	CITIZEN	C/E/G/L/M-32,E32J
											GILDEMEISTER	SPEED 32-10,Linear
											HANWHA	SL-32,XD-32
											JINN FA	JSL-32
											MAIER	ML32,ML36
											MANURHIN	Mirabel PM 32
											NEXTURN	SA-32
											POLYGYM	Serie 32mm
											STAR	JNC25,KNC/VNC/SR-25/32,MR32
											TORNOS	MR32
											TORNOS-DECO	DECO-32
											TRAUB	TNL-32
TSUGAMI	NP-32											

Guide Bushes



※ Carbide and HSS are available



NO.	ΦD	Φd	L	Thread M	Bore (ΦX-max)			Code			Machine type	
#123	50	44	90	M40x1.0	32	27	22				NOMURA	P-32
#124	52	45	82	M42x1.0	35	30	24		250.001		HANWHA	SL-35HP,SL-38,XD38H
#125	53	44	87.5	M40x1.0	32	27	22	3835E	27.001		TORNOS	MR32
#126	53	46	82	M45x1.0	38	33	27				HANWHA	SL-38HP-II
#127	53	46	92	M45x1.0	38	33	27		467.001		NEXTURN	SA-38
											TSUGAMI	BO385
#128	54	48	81	M46x1.0	38	33	27		496.001	T249	TORNOS-DECO	DELTA 38/5
											TSUGAMI	BH38,BO385
#129	54	48	82	M46x1.0	38	33	27		464.001	T248	STAR	STM-38
#12A	56.5	50	82	M49x1.0	42	36	29				POLYGYM	DIAMOND SY-42
#12B	59	52	95	M50x1.0	44	38	31				JINN FA	JSL-42AB